

# Ryarsh Primary School

## January 2021 School Opening



<b>Written by</b>	Daniel Childs
<b>Date Written</b>	January 2021

On December 30<sup>th</sup>, the government and the Department for Education announced that their contingency framework will be applied in some areas across the country, where infection rates of Covid19 were extremely high. Tonbridge and Malling is currently one of the areas where the contingency framework needs to be applied. This means that our school will remain open for children that are eligible under the critical worker and vulnerable category:

<https://www.gov.uk/government/publications/coronavirus-covid-19-maintaining-educational-provision/guidance-for-schools-colleges-and-local-authorities-on-maintaining-educational-provision>

For other children, there will be a shift towards providing remote education.

The reason for this change is due to a new strain of Covid19, which appears a great deal more contagious than previous strains of the virus. As a result, the rate of infections and deaths have been at an all-time high over the Christmas holiday period, meaning that further actions need to be taken.

As well as making changes to schools to reduce the risk of the virus, we must also make sure that we are able to provide high quality education opportunities for those in school, as well as those children learning remotely.

Delivering both remote learning and lessons in school will provide a great deal of challenges for us all. It will be vital to provide an approach to education that is:

- Meaningful for the children
- Manageable for staff and parents
- Fair and accessible for all
- Flexible and adaptable

In formulating the plan, as the school have done throughout the pandemic, the needs and safety of the children have been placed as the highest priority. Through running a successful return to school since September, we have seen how when well-planned actions are communicated and implemented well, they can be successful.

In order for this period to be as successful as possible, there will need to be a continued understanding from children, parents and staff that we all need to work together to try and reduce risk; first and foremost of the virus spreading through our community but of the risk that this period of time could have on the education of the children in our school.

Our planning continues to be underpinned by the Department for Education's advice on effective infection protection and control which states the following:

"We are asking schools to prepare for all pupils to return full-time from the start of the autumn term, including those in school-based nurseries. Schools should not put in place rotas.

Schools must comply with health and safety law, which requires them to assess risks and put in place proportionate control measures. Schools should thoroughly review their health and safety risk assessments and draw up plans for the autumn term that address the risks identified using the system of controls set out below. These are an adapted form of the system of protective measures that will be familiar from the summer term. Essential measures include:

1. a requirement that people who are ill stay at home
2. robust hand and respiratory hygiene
3. enhanced cleaning arrangements
4. active engagement with NHS Test and Trace
5. formal consideration of how to reduce contacts and maximise distancing between those in school wherever possible and minimise potential for contamination so far as is reasonably practicable

How contacts are reduced will depend on the school's circumstances and will (as much as possible) include:

- grouping children together
- avoiding contact between groups
- arranging classrooms with forward facing desks
- staff maintaining distance from pupils and other staff as much as possible"

Many of the protocols and procedures that were implemented during the Autumn term 2020 will remain the same in the Spring term 2021.

All protocol and procedures are aligned to the Risk Assessment of Schools document that has been produced using following 'Guidance for full opening: schools' (<https://www.gov.uk/government/publications/actions-for-schools-during-the-coronavirus-outbreak/guidance-for-full-opening-schools#introduction>).

The following plan outlines relevant detail from the government's guidance with further detail about how Ryarsh Primary School will adopt measures and ensure compliance to the statutory elements within. The aim of this plan is to minimise the risks, whilst acknowledging that we can't negate them entirely.

Within the government guidance, the systems of control that schools should adopt are clearly listed. This document will outline those systems of control and how Ryarsh Primary School has made them appropriate to our specific context and circumstance.

## System of controls

This is the set of actions schools must take. They are grouped into 'prevention' and 'response to any infection' and are outlined in more detail in the sections below.

### ***Prevention:***

- 1)** minimise contact with individuals who are unwell by ensuring that those who have coronavirus (COVID-19) symptoms, or who have someone in their household who does, **do not attend school**
- 2)** Where recommended, the use of face coverings in schools.
- 3)** clean hands thoroughly more often than usual
- 4)** ensure good respiratory hygiene by promoting the 'catch it, bin it, kill it' approach
- 5)** introduce enhanced cleaning, including cleaning frequently touched surfaces often, using standard products such as detergents.
- 6)** minimise contact between individuals and maintain social distancing wherever possible
- 7)** where necessary, wear appropriate personal protective equipment (PPE)
- 8)** Always keep spaces well ventilated.

Numbers 1 to 5, and number 8, must be in place in all schools, all the time.

Number 6 must be properly considered and schools must put in place measures that suit their particular circumstances.

Number 7 applies in specific circumstances.

### ***Response to any infection:***

- 9)** engage with the NHS Test and Trace process
- 10)** manage confirmed cases of coronavirus (COVID-19) amongst the school community
- 11)** contain any outbreak by following local health protection team advice

Numbers 9 to 11 must be followed in every case where they are relevant."

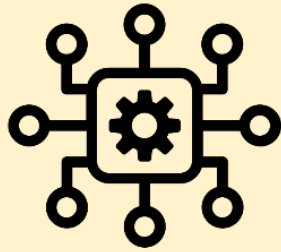
Numbers 9-11 above may require school to share pupil/parent contact information with public health officials. This sharing of information is permissible under current law and is in line with data protection guidance covering schools.

## Minimising risks



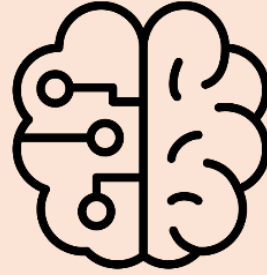
Created by Adrien Coquet  
from Noun Project

## School operations



Created by Adrien Coquet  
from Noun Project

## Curriculum



Created by Justin Blake  
from Noun Project

## Remote learning



Created by Vectors Point  
from Noun Project

## Section 1: public health advice to minimise coronavirus (Covid-19) risks.

Systems of control	Action
<p><b>Prevention</b></p> <p><b>1. Minimise contact with individuals who are unwell by ensuring that those who have coronavirus (COVID-19) symptoms, or who have someone in their household who does, do not attend school</b></p>	<p>If a member of staff, pupil, parent or any other adult show symptoms of Coronavirus (high temperature, persistent cough or loss/change in their sense of smell or taste) or they have tested positive, <b>they are not to attend school</b>. These symptoms can be found by visiting: <a href="https://www.nhs.uk/conditions/coronavirus-covid-19/symptoms/">https://www.nhs.uk/conditions/coronavirus-covid-19/symptoms/</a></p> <p>If an adult becomes unwell and is displaying symptoms of coronavirus, they are to remove themselves from the setting as soon as possible. The adults needs to self-isolate for 10 days or until a negative test is confirmed. If someone tests negative, and they feel well and no longer have symptoms similar to coronavirus, they can stop self-isolating and return to school. However, they may still have another flu/virus and should still stay at home until they feel better. Other members of their household can stop self-isolating also if a negative test is confirmed.</p> <p>If a child in the setting becomes unwell and is displaying symptoms of coronavirus, the existing guidelines will be followed i.e. the child will be removed to a designated isolated space (the Den/Nurture room) where they can be monitored and supported until they are collected by their parents or carers. The door will need to remain closed and a window should be opened for ventilation.</p> <p>PPE must be worn by staff caring for the child while they await collection if a distance of 2 metres cannot be maintained (such as for a very young child or a child with complex needs). If contact with the child or young person is necessary, then disposable gloves, a disposable apron and a fluid-resistant surgical face mask must be worn by the supervising adult. If a risk assessment determines that there is a risk of splashing to the eyes, for example from coughing, spitting, or vomiting, then eye protection should also be worn. The member of staff supporting the symptomatic child does not need to go home to self-isolate unless they develop symptoms themselves or if the symptomatic child subsequently tests positive or they have been requested to do so by NHS Test and Trace.</p> <p>Everyone in the class must wash their hands thoroughly for 20 seconds with soap and running water or use hand sanitiser after any contact with someone who is unwell.</p> <p>Any person cleaning should wear disposable or washing-up gloves and aprons for cleaning. Once cleaning is finished, these should be double-bagged, then stored securely for 72 hours then thrown away in the regular rubbish. Staff should wash their hands before starting cleaning and after they have disposed of their used clothing.</p> <p>Cleaning should be administered using a disposable cloth. Hard surfaces should be cleaned first with warm soapy water. Surfaces should then be cleaned with normal disinfectant products you normally use. Pay particular attention to frequently touched areas and surfaces, such as bathrooms, stairwells and door handles.</p>

	<p>If an area is believed to be at risk of more heavy contamination from a person with COVID-19 (such as an isolation room, the teaching room where the child was learning, circulations spaces, etc.), adults cleaning must use a higher level of cleaning PPE, to include a face mask, disposable apron and gloves and eye protection, such as goggles or a visor. Once cleaning is finished, the PPE should be double-bagged, then stored securely for 72 hours then thrown away in the regular rubbish. Cleaning staff should wash their hands after they have disposed of their used PPE.</p> <p>There will also be a designated toilet assigned to children who fall ill. Once the child is collected, both rooms (waiting and toilet if used) will be thoroughly cleaned using standard cleaning products by a member of staff wearing both gloves and a mask.</p> <p>The designated isolation spaces/toilets are as follows;</p> <ul style="list-style-type: none"> <li>- Isolation space: Den/Nature Room</li> <li>- Toilet: Kitchen corridor</li> </ul> <p>The child should then be tested for coronavirus. Other members of the child’s household should self-isolate for 10 days or until a negative test is confirmed. If the test is negative the child can return to the setting assuming they are well enough. If the test is positive, all children and adults within that group should self-isolate for 10 days and not attend the setting. This is why it is so important to not mix with other children and adults outside of the year group or phase bubble– it is a protective mechanism. This guidance also applies if an adult presents as unwell and is subsequently tested as positive.</p>
<p><b>Prevention</b></p> <p><b>2. Where recommended, use face coverings in school</b></p>	<p>Primary School Children will not need to wear face coverings.</p> <p>Any visitors to the school will be asked to wear a face covering, where this is deemed appropriate.</p>
<p><b>Prevention</b></p> <p><b>3. Clean hands thoroughly more often than usual.</b></p>	<p>Adults and children are to wash their hands on the following occasions:</p> <ul style="list-style-type: none"> <li>- Entry to school</li> <li>- Before/after break times</li> <li>- Before lunch</li> <li>- Before and after eating</li> <li>- When they change rooms (for interventions etc.)</li> <li>- Before leaving school</li> <li>- Anytime that they visit the toilet or cough/sneeze in to their hands.</li> </ul> <p>Additional hand sanitisers pumps have been purchased and are stationed in each classroom as well as additional hand sanitisers at appropriate points in school i.e. the reception desk for visitors and staff upon arrival, the staff room and the hall.</p>

<p><b>Prevention</b></p> <p>4. <b>Ensure good respiratory hygiene by promoting the ‘catch it, bin it, kill it’ approach.</b></p>	<p>Children are consistently reminded of the posters around school that encourage them to catch it, bin it and kill it. Children will be reminded that if tissues are regularly disposed of throughout the day, they should be thrown in to the bins in each classroom.</p>
<p><b>Prevention</b></p> <p>5. <b>Introduce enhanced cleaning, including cleaning frequently touched surfaces often, using standard products such as detergents.</b></p>	<p>At various intervals, adults will disinfect and clean tables, door handles and equipment. This will need to take place at break, lunchtime and after school. Each class will have their own allotted set of classroom cleaning equipment. It will be stored appropriately within the classrooms.</p> <p>After any interventions spaces have been used (library, harmony room, pod, rainbow room, nurture room), it will need to be cleaned by the adult. Cleaning equipment will need to be stored appropriate in these rooms.</p> <p>At the end of lunchtime and at the end of the day, the staffroom surfaces will need to be wiped down by a member of the team that is not based in class for the afternoon.</p> <p>Children should be allowed to go to the toilet as they would do in a normal school day, however staff need to be very aware of how many other children are also using the toilet and ensure that children wash their hands afterwards. Toilets and sinks are to be cleaned regularly. Toilets will be allocated in the following ways:</p> <ul style="list-style-type: none"> <li>• Reception: reception toilets</li> <li>• Year 1 &amp; 2: toilets by the hall</li> <li>• Year 3 &amp; 4: toilets by the office</li> <li>• Year 5 &amp; 6: toilets in the pod</li> </ul> <p>During break times, the children will need to use the same allocated toilets. Children will need to ask the adult supervising them during break and lunchtime to go to the toilet as this will help the adult make sure that children go to the toilet one at a time.</p>
<p><b>Prevention</b></p> <p>6. <b>Minimise contact between individuals and maintain social distancing wherever possible.</b></p>	<p><b>Grouping the Children</b></p> <p>Within the government guidance, it recognises that younger children will not be able to maintain social distancing, and it is acceptable for them not to distance within their group. Bubbles provide an additional protective measure and they make it quicker and easier to identify those who need to self-isolate as a result of a positive test result.</p>



For the most part, our classes will form our bubbles of children. Where appropriate, we may need to work in phases i.e. year groups working as 1/2, 3/4, 5/6.

### **Measures within the classroom**

Adults are to encourage children to maintain a distance between one another whilst inside and reduce the amount of time that they are in face-to-face contact with one another. Where circumstances allow, adults are to try to distance from children and one another.

Children with additional needs should receive as much support as normal but adults are to be extra vigilant and mindful of their face-to-face time with the children and reduce this where possible.

Classrooms need to be adapted to support distancing where possible. With the reduced numbers in the classrooms from January 2021, it will make distancing the children much easier by reconfiguring the classroom layout. Our approach to this will be based on current guidance, as well as the age and needs of the children.

### **Measures elsewhere**

There will be no whole-school events where children and adults are required to congregate.

### **Measures for arriving at and leaving school (inc break/lunch times)**

The start and end time of school will continue as it was before Christmas:

Reception: 8.55am – 3.00pm

Key Stage 1: 8.50am – 3.05pm

Lower Key Stage 2 (Y3/4): 8.45am – 3.10pm

Upper Key Stage 2 (Y5/6): 8.40am – 3.15pm

The same system will be put in place in terms of the one way entry system.

The above timings will be kept under review. They will be altered if we believe that it would be significantly safer to make changes.

Parents mustn't congregate at the 'drop-off' point, they must instead arrive on time and then depart. The emergency gates will be opened so that parents can continue to use a one way system during the mornings.

Parents are to be encouraged to walk to school where possible and only one parent will be permitted on the school grounds. If children cycle or scooter to school, then they are to use the storage area to lock their bike/scooter securely.

No dogs will be permitted on site.

Children will continue to use the external doors to their classrooms to prevent large groups of children gathering in the corridors. The only group that will be using the corridors will be children in reception. They will be entering by the nurture room and then entering their room via their outdoor area.

Parents must arrive on time for entry to school, they must not arrive early or late. In the instance that parents have children in more than one year group, they can bring the children in to school during the same time slot. Parents will be asked to drop off and leave, rather than remain on school grounds.

In terms of the end of the day, parents must not arrive early or late. They must collect their children on time so that teachers can release children safely. The playground will be open to parents to briefly wait in before their children are released to them. Whilst parents are waiting, social distancing must be adhered to. After school, we will not have the capacity to bring siblings out at different times as teaching assistants will be working on interventions or supporting remote learning throughout the afternoon.

Teachers will not be available to speak to unless teachers initiate the contact. Teachers must commit their time to ensuring that all children safely leave their care. Parents can contact teachers through email if they have queries about the day or they can call to make a phone/zoom appointment.

The school office is not to be accessed by parents unless through prior arrangement via a call or email. The office will not be open for parents to drop-in to. The DfE guidance states that coming into the site without an appointment is not allowed. However, parents can obviously still call and receive support over the phone or via email. A member of the team will go to classrooms throughout the day to collect any items brought in to school (money, forms etc.).

#### **Other considerations**

In terms of classroom resources, for regularly used stationery, staff and children will all have their own individual set that is not to be shared. Children can bring in stationery from home but it must be kept in trays and should not be shared. Other classroom resources like games can be used within the bubble but should be cleaned following use.

Pupils should not bring anything additional from home. It is necessary to limit the resources that can be brought into school. The list below is all that will be allowed to be brought in:

- Small, simple back pack
- Lunch box and water bottle
- Outdoor wear – coat/hat/gloves etc.
- Reading books (including reading records)

There can be no 'show and tell' or bringing in cards and toys from home that may encourage children passing these around during break times and lunchtimes. However, children can now take books home and return them as normal. Books are to be returned as normal but taken out of circulation for 72 hours before being returned to the class library, school library or reading scheme boxes. There will be a different system in place for phonics books in years R, 1 and 2.

<p><b>Prevention</b></p> <p><b>7. Where necessary, wear appropriate personal protective equipment (PPE).</b></p>	<p>PPE should only be used for two reasons; where an individual is presenting with coronavirus symptoms and/or when a child is receiving intimate care (toileting/relevant first aid support). However, if a member of staff would prefer to use PPE when working with children, this is also allowed.</p> <p>Children need to know that some adults might be wearing PPE and that it is 'ok'.</p>
<p><b>Prevention</b></p> <p><b>8. Always keeping occupied spaces well ventilated.</b></p>	<p>Once the school is in operation, it is important to ensure it is well ventilated and a comfortable teaching environment is maintained.</p> <p>This can be achieved by a variety of measures including:</p> <ul style="list-style-type: none"> <li>• natural ventilation – opening windows (in cooler weather windows should be opened just enough to provide constant background ventilation, and opened more fully during breaks to purge the air in the space). Opening internal doors can also assist with creating a throughput of air</li> <li>• natural ventilation – if necessary external opening doors may also be used (as long as they are not fire doors and where safe to do so)</li> </ul> <p>To balance the need for increased ventilation while maintaining a comfortable temperature, the following measures should also be used as appropriate:</p> <ul style="list-style-type: none"> <li>• opening high level windows in preference to low level to reduce draughts</li> <li>• increasing the ventilation while spaces are unoccupied (for examples, between classes, during break and lunch, when a room is unused)</li> <li>• providing flexibility to allow additional, suitable indoor clothing.</li> <li>• rearranging furniture where possible to avoid direct drafts</li> </ul> <p>Heating should be used as necessary to ensure comfort levels are maintained particularly in occupied spaces.</p>
<p><b>Response to any infection</b></p> <p><b>9. Engage with NHS Test and Trace.</b></p>	<p>Parents and staff are expected to engage in the NHS Test and Trace process if required to do so. This includes:</p> <ul style="list-style-type: none"> <li>• booking a test if they (or their child) are showing symptoms.</li> <li>• providing details of anyone they or their child have been in close contact with if they were to test positive for coronavirus (COVID-19) or if asked by NHS Test and Trace</li> <li>• self-isolate if they have been in close contact with someone tests positive for coronavirus (COVID-19) , or if anyone in their household develops symptoms of coronavirus (COVID-19)</li> </ul> <p>Anyone who displays symptoms of coronavirus can and should get a test. All children can be tested, included children under 5, but children aged 11 and under will need to be helped by their parent if they are using a testing at home kit.</p> <p>If school thinks that the family of the symptomatic child/adult is unlikely to book a test appropriately, we will provide a home testing kit.</p>

	<p>Contact with the symptomatic family will be maintained so that we can respond appropriately to either a positive or a negative result.</p> <p>If the test result is negative, the child can return to school assuming they would do so under normal circumstances.</p>
<p><b><i>Response to any infection</i></b></p> <p><b>10. Manage confirmed cases of coronavirus (Covid-19) amongst the school community.</b></p>	<p>School must provide the details of those children/adults that have been in direct close contact with the child/adult (face-to-face contact for any length of time); proximity contacts (extended close contact – within 1m-2m for more than 15 minutes); travelling in a small vehicle with the infected person.</p> <p>School will inform parents of the infection, but we will not reveal the name of the infected child/adult.</p> <p>Those contacted or sent home must self-isolate for 10 days but those living in the household do not have to unless the child shows symptoms.</p> <p>Ryarsh Primary will not (as per the DfE instruction) be able to ask for evidence of negative test results or other medical evidence before admitting children back after a period of self-isolation.</p>
<p><b><i>9. Response to any infection</i></b></p> <p><b>Contain any outbreak by following local health protection team advice.</b></p>	<p>If school has 2 or more confirmed cases within a 10 day period, this could be considered an outbreak and greater measures would need to be put in place. The health protection team would advise throughout.</p>

## Section 2: School operations

Aspect of school	Action
<b>Attendance &amp; Uniform</b>  The government's contingency framework sets out attendance expectations for those under the framework in January 2021.	<b>Attendance expectations</b>  Primary schools should only allow children of critical workers and those defined as vulnerable to attend.  Children of critical workers: Where a critical worker parent or carer notifies a school that their child requires on-site provision, the school should make this available.  Vulnerable children: Vulnerable children are expected to attend on-site provision where it is appropriate for them to do so. This should remain a priority for primary educational providers and local authorities.  High quality remote education should be provided for all other pupils.  <b>Pupils who are shielding or self-isolating</b>  Parents who have children who were once shielding due to medical advice may wish to isolate their children again. Ryarsh Primary will support those parents through dialogue with the necessary so that appropriate advice can be offered and leeway afforded.  Where children can't attend school as parents are following clinical and/or public health advice, absence will not be penalised.  <b>Uniform</b>  Uniform expectations from January 2021 will remain the same.  On days when the child has PE, the children must come to school in their PE kit. This is to allow the PE kit to go home following lessons to be cleaned and reduce the amount stored in cloakrooms. Where possible, children will need to wear school PE kit. However, exceptions can be made if this is likely to support the child and family.  Any order for new uniform can be made by emailing the office. The office will then deliver the new set of uniform to the child/parent.  For any children not able to wear school uniform, we will take a mindful and considerate approach and work alongside parents to support them as necessary.

<p><b>Safeguarding (including online safety)</b></p>	<p>There should be no change to local multi-agency safeguarding arrangements, which remain the responsibility of the three safeguarding partners (local authorities, clinical commissioning groups and chief officers of police). The government expects all local safeguarding partners to be vigilant and responsive to all safeguarding threats and ensure vulnerable children and young persons are safe – particularly as more children and young people will be learning remotely.</p> <p>It is expected that schools will have a trained DSL (or deputy) available on site. At Ryarsh, we currently have two trained DSLs on site with two more members of staff due to complete safeguarding training.</p> <p>We will be producing remote learning guide for parents that will explain how children can be kept safe when accessing remote learning at home.</p>
<p><b>Catering</b></p>	<p>Schools should provide meal options for all pupils who are in school and meals should be available free of charge to all infant pupils and pupils who meet the free school meals eligibility criteria. Schools should also continue to provide free school meals or food parcels for eligible pupils who are not attending school where they:</p> <ul style="list-style-type: none"> <li>● are self-isolating</li> <li>● have had symptoms or a positive test result themselves</li> <li>● are a close contact of someone who has coronavirus (COVID-19)</li> <li>● are not attending as a result of implementation of local restrictions advised by Government</li> </ul> <p>Schools should work with suppliers to prepare meals or food parcels to be collected by, or delivered to, these eligible children during their time at home. Any parcels should be distributed in line with guidance on social distancing and local restriction tiers and should meet the school food standards.</p> <p>The Covid Winter Grant Scheme is in place if families report difficulties in accessing food or paying household bills. Access to this support is through local authorities.</p>
<p><b>Lunch and break times</b></p>	<p>Midday supervisors and other members of staff will continue to support the supervision of lunchtimes. Apart from the reception bubble, we will continue to use the school hall as a space for the children to eat in. The space will need to be cleaned both before and after use.</p> <p>Timings of lunchtimes will be continue to be staggered, as will break times:</p> <p><b>Break times</b></p> <ul style="list-style-type: none"> <li>➤ Key Stage 1: 10.15am – 10.30am</li> <li>➤ Lower Key Stage 2 (Y3/4): 10.30am – 10.45am</li> <li>➤ Upper Key Stage 2 (Y5/6): 10.45am – 11.00am</li> </ul>

**Lunch times**

- Early Years: 11:45 am– 12:45pm
- Key Stage 1: 12.00pm – 1.00pm
- Lower Key Stage 2 (Y3/4): 12.30pm – 1.30pm
- Upper Key Stage 2 (Y5/6): 12.30pm – 1.30pm

The classrooms will be cleaned during lunchtimes.

Children will need to clean their hands with hand sanitiser as they enter the hall. There will be a hand gel station in the hall.

***Extended Schools  
(breakfast and after-  
school club)***

Extended schools will continue to be offered in order to support our families that require this wraparound care. Children attending this will continue to be kept in separate phase bubbles, observing very good hand hygiene. The hall will be set up so there are the following zones:

Zone 1 - Bubble 1: Reception

Zone 2 - Bubble 2: Year 1/2

Zone 3 - Bubble 3: Year 3/4

Zone 4 - Bubble 4: year 5/6

Resources will be organised into different boxes for each bubble. These resources should be cleaned at the end of each session.

Breakfast and tea will be provided at the start of the January 2021 term. The current pricing structure will remain the same.

### Section 3: Curriculum, behaviour and pastoral support

Aspect of school	Action
<p><b>Curriculum expectations</b></p>	<p>Ryarsh Primary School will be offering a full curriculum from January 2021 with all children being taught all subjects. We believe that our children deserve a rich and diverse curriculum that is designed to help them flourish in all areas of the curriculum. This curriculum will be offered for both those children learning in school and those children learning remotely.</p> <p>Lessons in school will proceed within usual year group bubbles and will be delivered by class teachers. Our remote learning approach will provide those children learning from home with the opportunity to receive input from the class teacher also, either through pre-recorded videos or through joining ‘live’ zoom sessions. More details about this is provided in the remote learning section of this plan.</p> <p>Additional interventions will be provided in school as necessary.</p> <p>The Relationship and Sex Education element of our curriculum will still commence from January 2021. Please look at the school website next week for further details.</p>
<p><b>Music</b></p>	<p>All pupils should have access to a quality arts education. Music, dance and drama build confidence and help children live happier, more enriched lives, and discover the joy of expressing themselves.</p> <p>From the start of January 2021, we will continue to use the Charanga music scheme to provide music lessons to children. The lessons provided will not require instruments but will focus on other music skills. In school, the lessons will be delivered following guidance. For children remote learning, access will be provided to the same lessons and resources.</p>
<p><b>Physical activity in schools</b></p>	<p>PE lessons are still to take place. Where possible, they are to take place outside as transmission of the disease is reduced in the outdoors.</p> <p>External coaches can still be used to deliver PE sessions as long as they also follow the protective measures.</p>